

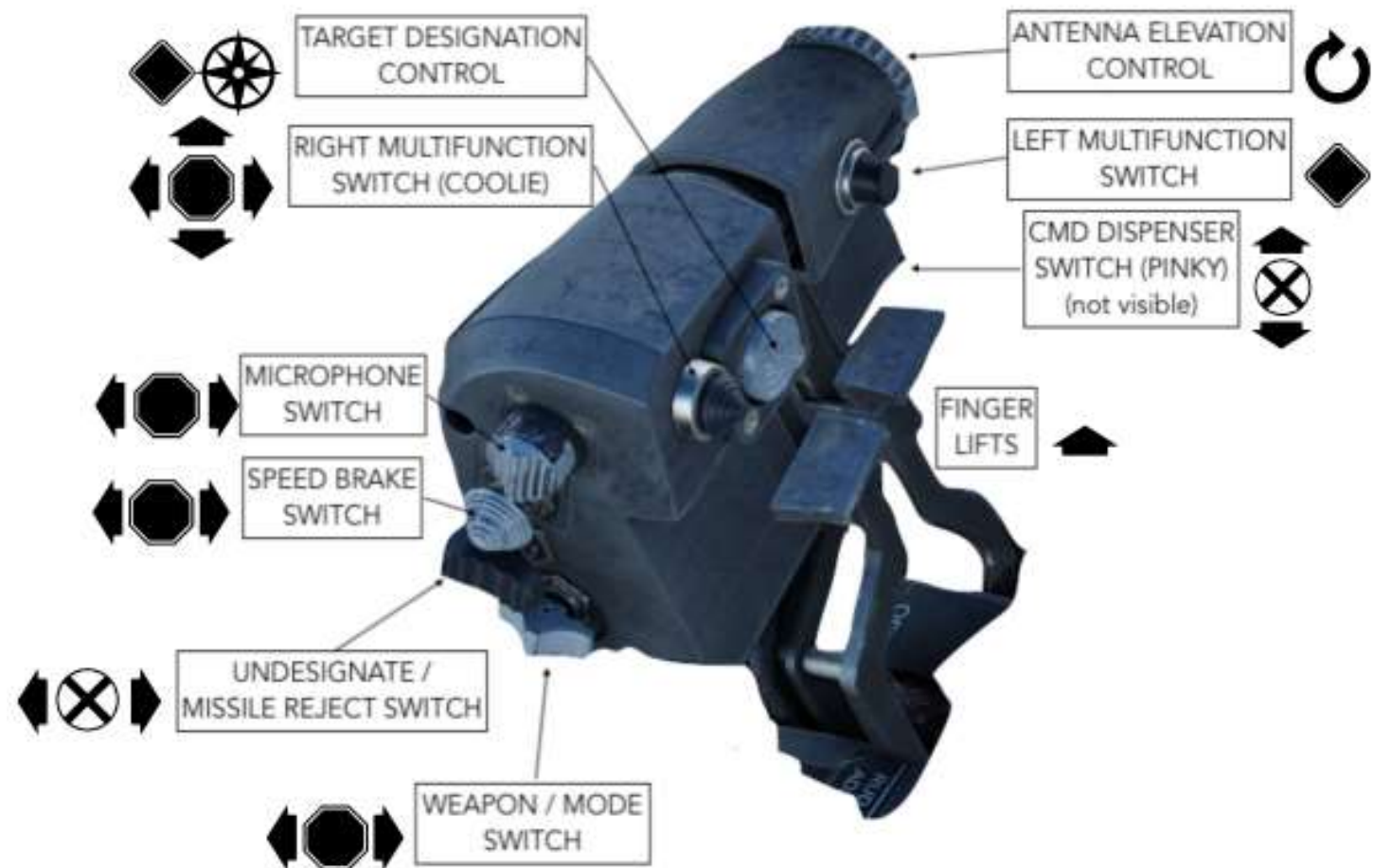
Front Stick

Front Stick

Switch	Direction	Action	[0] Non-functional features in EA marked with Strikethrough [1] If A/G with TPOD HUD BS and no target, designates on HUD LoS [2] Short Press AFTER Castle PRESS Short [3] Taking command a second time in A/G mode sets TPOD HUD BS [4] With Coolie Down simultaneously [5] With Master Caution Held Simultaneously [6] Pattern Steering Line Enable/Disable when cursor function target					
Trigger	1 st Detent	VTR						
	2 nd Detent	Fire Gun						
Weapon Release	PRESS	Weapon Release [1]						
Trim	Fore/Aft/Left/Right	Flight Control Trim						
	PRESS	CMD MAN 1						
NWS Button	Direction	Weight on Wheels	AIM-9					
	PRESS	HOLD: NWS Hi	Cage/Uncage					
AP/Steering Disengage (Paddle)	Direction	Weight on Wheels	Autopilot	Manual TF	Auto TF			
	PRESS	Stop AFCS Bit	AP Disengage	Reset Flyup	AP Disengage			
	HOLD	NWS Disengage		AP Disengage	Revert to Manual TF			
Castle	Direction	Short	Long	Take Command Enable [2]	Look Into Turn Enable [4]	Caution Control Enable [5]		
	FWD	A/A or A/G Master Mode		Take Command HUD [3]	Look Down			
	AFT	Scroll MPCD	Take Command MPCD	Take Command MPCD	Look Up	MPCD		
	LEFT	Scroll L MPD	Take Command L MPD	Take Command L MPD	Look L	L MPD		
	RIGHT	Scroll R MPD	Take Command R MPD	Take Command R MPD	Look R	R MPD		
	PRESS	Take Command Enable						
Auto Acquisition Switch/ Air Refueling Release	Direction	HUD	TSD	A/A Radar	RBM	HRM	TPOD	AAR
	FWD		Smaller Cue	See A/A Chart 1 [7]	Smaller Window		SHORT: FoV Toggle LONG: Snowplow	
	AFT	A/G: Auto/CDIP	Larger Cue		Larger Window/ PSL Enable/Disable [6]		SHORT: Return to Cue LONG: STAB	
	PRESS		Return to PP Map		Mode Reject		Track/Untrack	AAR Probe Disengage

[7] A/A Chart 1

Switch	Direction	Search	STT	2TWSH	4TWSH	3HDT	2HDT	Narrow	AIM-7
Auto Acq	FWD Short	SS or BST	3HDT			4TWSH	3HDT		
	FWD Long	LR BST	2HDT						VS BST
	AFT Short	VTS	2TWSH	STT					
	AFT Long								HPRF Flood
	PRESS	Return to Search							

Front Throttle

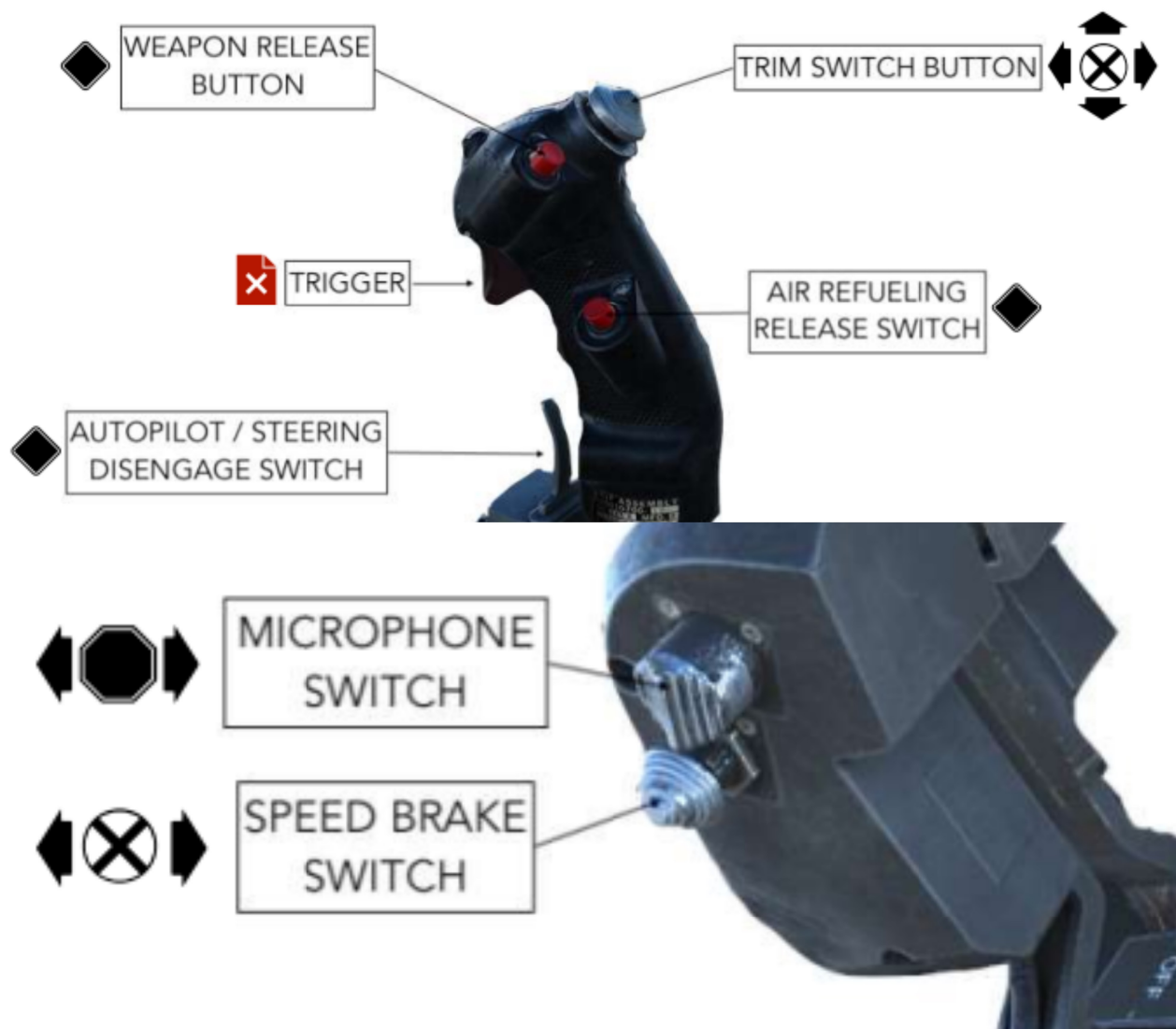
Front Throttle

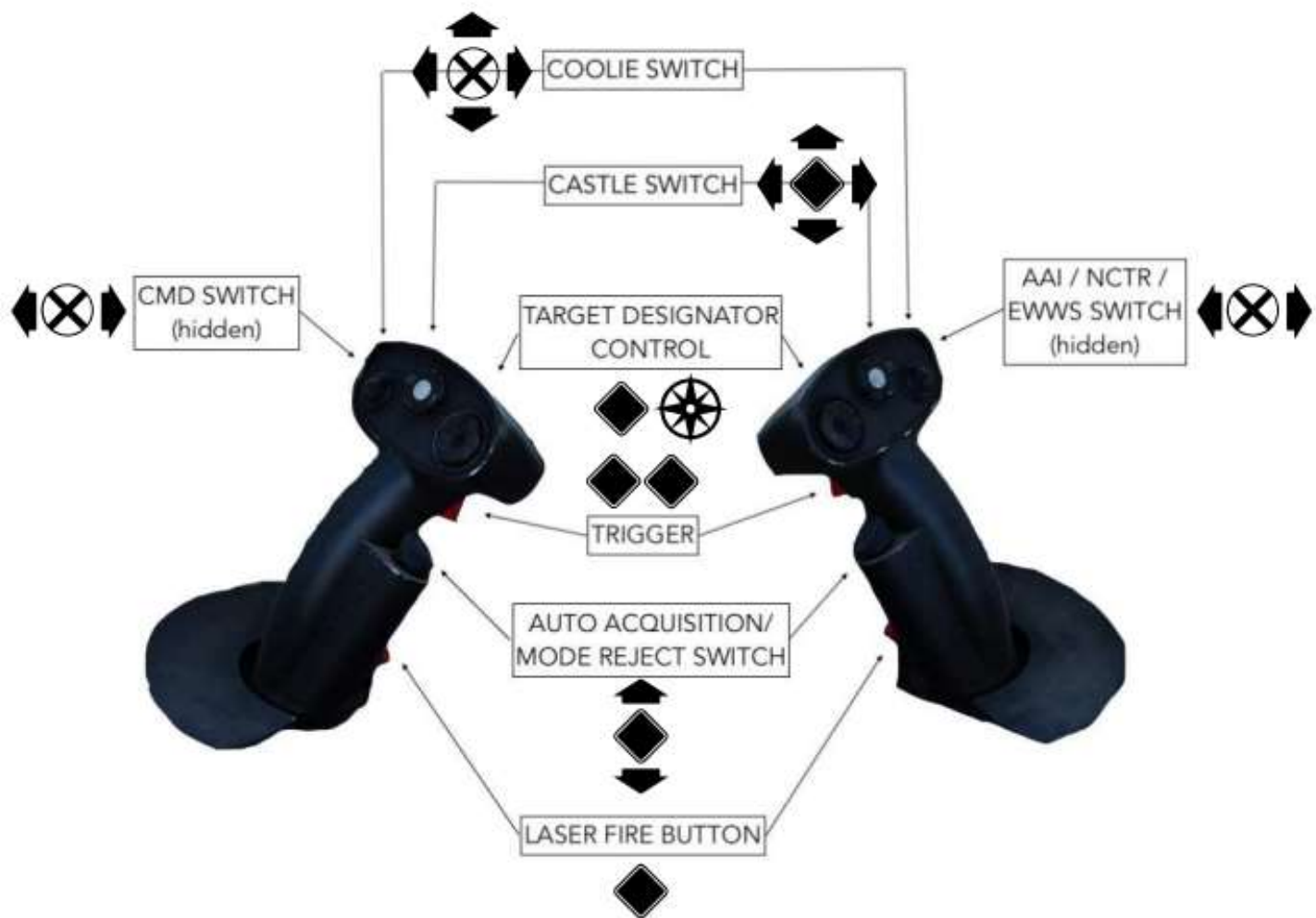
Switch	Direction	Action	[4] With Castle Simulataneously [8] Must be In Command of HUD in A/G, NAV, or INST [9] A/A Chart 2 below							
Mic	FWD	Tx Radio 1/3								
	AFT	Tx Radio 2								
Speed Brake	FWD	Retract	Switch	Direction	Action					
	CENTER	Hold								
	AFT	Extend		TDC	PRESS			SHORT: Miniraster LONG: Search Sort		
Weapon/ Mode Switch (China)	FWD	MRM							Direction	RWS
	CENTER	SRM			Azimuth Bump			Wide/Narrow		
	AFT	Guns								
Undesignate/ Missile Reject (Boat)	FWD	Missile Reject								
	AFT	Undesignate								
Antenna Elevation Wheel	ROTATE	Elevation Rate Control								
CMD (Pinky)	UP	CMD MAN 2								
	DOWN	CMD MAN 1								
Left Multifunction Switch	Direction	HUD						TSD	SRM	RBM/HRM
	PRESS	Cage/Unengage VV [8]	Track/ Untrack	Manual SBR	Freeze/ Unfreeze	Laser Fire/ Stop Firing				
Coolie	Direction	A/A Radar	A/A Gun	RBM/HRM/ TPOD/TSD						
	UP	Quick Step	LCOS/GSD	Quick Step						
	DOWN	Missile BS/ Gun Sight Stiffen/ Look Into Turn Enable [4]								
	RIGHT	SHORT: NCTR LONG: EID Interrogate								
	LEFT	HOLD: AAI Interrogate								
TDC	Direction	Nav or A/G HUD	TSD	A/A Radar	RBM/HRM/ TPOD	Nav Pod				
	Slew	Slew	Slew	See A/A Chart 2 [9]	Slew					
	PRESS	Designate	Cue			Cursor Function				

WSO Stick and Throttle

Switch	Direction	Action
Trim	F/A/L/R	Flight Control Trim
Weapon Release	PRESS	Weapon Release
AAR Disengage	PRESS	AAR Disengage
AP/Steering Disengage (Paddle)	Direction	Weight on Wheels
	PRESS	Stop AFCS Bit
	HOLD	NWS Disengage
Mic	FWD	Tx Radio 1/3
	AFT	Tx Radio 2
Speed Brake	FWD	Retract
	CENTER [10]	Speed Brake Follows Front Cockpit Command
	AFT	Extend

[10] The WSO Speed Brake switch is spring centered



WSO Hand Controllers

WSO Hand Controllers

Switch	Direction	Action	[5] With Master Caution Held Simultaneously [7] See A/A Chart 1 on page 2 [9] See A/A Chart 2 on page 4 [11] With Trigger Half-Action [12] When Cursor Function Target			
CMD	FWD	CMD MAN 1				
	AFT	CMD MAN 2				
AAI	FWD	LONG: AAI				
	AFT	SHORT: NCTR LONG: EID				
Coolie	UP	Scroll MPD				
	DOWN	Scroll MPCD				
	LEFT	Take Command L/ Move Cautions [5]				
	RIGHT	Take Command R/ Move Cautions [5]				
Laser Fire	Direction	AIM-9	RBM/HRM	TPOD		
	PRESS	SBR	Freeze/Unfreeze	Laser Fire		
Castle	Direction	TSD	A/A Radar	RBM	HRM	TPOD
	FWD	Decrease Map Scale	MRM Search	Cursor Map		SHORT: White/Black/Auto Track LONG: Black/White Hot
	AFT	Increase Map Scale	SRM Search	Cursor Target		
	LEFT	Toggle Radar/FLIR Cue	Undesignate	Cursor Cue/Mark		SHORT: Cursor Cue/Mark LONG: Handoff Initiate STA 2
	RIGHT		Missile Reject	Cursor Update		SHORT: Cursor Update LONG: Handoff Initiate STA 8
	PRESS	Sequence Point Select	Quick Step	Sequence Point Select		
TDC	Slew	Slew	Slew [9]/ Elevation Control [11]	Slew/ Elevation Control [11]	Slew	
	PRESS				Expand [11]	Toggle ATRK/PTRK
Auto Acq [12]	FWD	Smaller Cue	See A/A Chart 1 [7]	Smaller Window/ PPI Range [11]		SHORT: FoV Toggle LONG: Snowplow
	AFT	Larger Cue		Larger Window/ PPI Range [11]/ PSL Enable [12]		SHORT: Return to Cue LONG: STAB
	PRESS	Return to PP Map		Mode Reject/ PSL Undesignate [12]		Undesignate
Trigger	Half-Action	Track/Untrack	Elevation Control/ PPI Range Change/ Expand Enable [11]			Track/Untrack
	Full-Action	Cue	Designate	Cursor Function		

Changelog

Date	Version	
25 Jun 2023	0.1	Initial Version
25 Jun 2023	0.2	Renamed previous version from 1.0 to 0.1 Custom A/A Charts (including removing A/A Chart 3) Cleared empty pages Changed button names to conform to given diagrams Removed highlight from empty cells
25 Jun 2023	0.3	Changed more button names to conform to diagrams Added note about WSO A/A TDC depress no action Reorganized A/A Chart 1
26 Jun 2023	1.0	Initial public release Added note regarding EA status Added note about Take Command Enable on front Castle
26 Jun 2023	1.1	Initial kneeboard release (not pretty but it works)
26 Jun 2023	1.2	Renamed several button actions from DOWN to PRESS
26 Jun 2023	2.0	Added Portrait orientation. Kneeboards are now Portrait Removed redundant AIM-7 Auto Acq binds Simplified A/A Chart 2 and RBM/HRM/TPOD TDC
4 July 2023	2.1	Added Strikethrough to non-functional items Simplified WSO Trigger Half-Action and Cursor Function Target Notes Another DOWN command renamed to PRESS Clarified PSL Enable/Disable Added notes about A/G HUD Designation Reorganized Changelog and Notes
8 Dec 2023	2.2	Discontinued Landscape Version due to redundancy Updated WSO Castle Binds Updated TGP Auto Acq Binds Updated EA Non-Functional Features
3 Jan 2024	2.3	Added WSO TDC Depress ATRK/PTRK Toggle (Thanks Stryker990!)
26 Feb 2024	2.4	Updated AAI/EID binds (Thanks again Stryker990)